

Holiday CHEER



Holiday CHEER

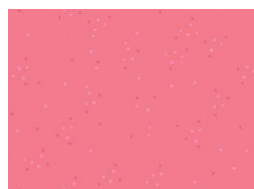
QUILT DESIGNED BY AGFstudio

ADVENTALE

FABRICS DESIGNED BY KATARINA ROCCELLA



Fabric A
PE-540
COCONUT MILK



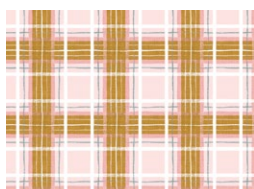
Fabric B
ADV-25901
TWINKLE LITTLE STARS CANDY



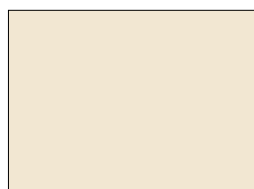
Fabric C
FE-528
BUBBLEGUM



Fabric D
ADV-25904
WINTERBERRY WHISPERS



Fabric E
ADV-25910
JINGLE PLAID



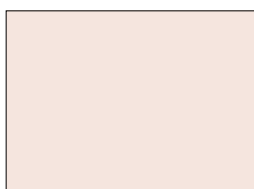
Fabric F
PE-436
CREME DE LA CREME



Fabric G
ADV-25905
SUGARED ORNAMENTS



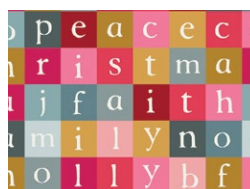
Fabric H
ADV-25913
JOLLY RIBBONS FESTIVE



Fabric I
PE-522
ETHEREAL PINK



Fabric J
ADV-25907
TWINKLE LITTLE STARS SKY



Fabric K
ADV-25915
LETTERS TO SANTA



Fabric L
PE-536
CACTUS FLOWER



Fabric M
ADV-25906
MERRIMENT FLORA



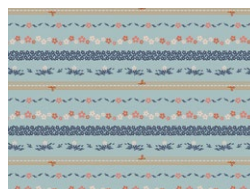
Fabric N
PE-471
SWEET MACADEMIA



Fabric O
ADV-25911
FAWNS & FLOWERS



Fabric P
ADV-25908
PLAYFUL GNOMES SWEET



Fabric Q (Binding)
BIN-25112
DITSY CHAIN BOUND SKY



BACKING
ADV-25900
CHRISTMAS VILLAGE





FINISHED SIZE | 76½" x 96½"

FABRIC REQUIREMENTS

Fabric A	PE540	½ yd.
Fabric B	ADV25901	⅝ yd.
Fabric C	FE528	½ yd.
Fabric D	ADV25904	½ yd.
Fabric E	ADV25910	⅜ yd.
Fabric F	PE436	⅝ yd.
Fabric G	ADV25905	1 yd.
Fabric H	ADV25913	⅞ yd.
Fabric I	PE522	½ yd.
Fabric J	ADV25907	¼ yd.
Fabric K	ADV25915	¼ yd.
Fabric L	PE536	⅜ yd.
Fabric M	ADV25906	⅝ yd.
Fabric N	PE471	2¾ yd.
Fabric O	ADV25911	⅜ yd.
Fabric P	ADV25908	¼ yd.
Fabric Q	BIN25112	¾ yd.

BACKING FABRIC
ADV25900 6 yds *(Suggested)*

BINDING FABRIC
Fabric **Q** BIN25112 ¾ yd. *(Included)*

CUTTING DIRECTIONS

¼" seam allowances are included.
WOF means width of fabric.

Fabric A

- Cut 2 (two) 6½" x WOF strips, then;
 - Sub-cut 14 (fourteen) Triangle Templates.

Fabric B

- Cut 3 (three) 6½" x WOF strips, then;
 - Sub-cut 27 (twenty seven) Triangle Templates.
 - Sub-cut 3 (three) Mini Triangle Templates.

Fabric C

- Cut 2 (two) 6½" x WOF strips, then;
 - Sub-cut 11 (eleven) Triangle Templates.
 - Sub-cut 9 (nine) Mini Triangle Templates.

Fabric D

- Cut 2 (two) 6½" x WOF strips, then;
 - Sub-cut 17 (seventeen) Triangle Templates.

Fabric E

- Cut 1 (one) 6½" x WOF strip, then;
 - Sub-cut 9 (nine) Triangle Templates.
- Cut 1 (one) 3½" x WOF strip, then;
 - Sub-cut 7 (seven) Mini Triangle Templates.

Fabric F

- Cut 3 (three) 6½" x WOF strip, then;
 - Sub-cut 21 (twenty one) Triangle Templates.

Fabric G

- Cut 5 (five) 6½" x WOF strips, then;
 - Sub-cut 38 (thirty eight) Triangle Templates.
 - Sub-cut 8 (eight) Mini Triangle Templates.

Fabric H

- Cut 4 (four) 6½" x WOF strips, then;
 - Sub-cut 36 (thirty six) Triangle Templates.

Fabric I

- Cut 2 (two) 6½" x WOF strips, then;
 - Sub-cut 14 (fourteen) Triangle Templates.

Fabric J

- Cut 1 (one) 6½" x WOF strip, then;
 - Sub-cut 7 (seven) Triangle Templates.

Fabric K

- Cut 1 (one) 6½" x WOF strip, then;
 - Sub-cut 2 (two) Triangle Templates.

Fabric L

- Cut 1 (one) 6½" x WOF strip, then;
 - Sub-cut 8 (eight) Triangle Templates.
- Cut 1 (one) 3½" x WOF strip, then;
 - Sub-cut 4 (four) Mini Triangle Templates.

Fabric M

- Cut 3 (three) 6½" x WOF strips, then;
 - Sub-cut 20 (twenty) Triangle Templates.
 - Sub-cut 12 (twelve) Mini Triangle Templates.

Fabric N

- Cut 14 (fourteen) 6½" x WOF strips, then;
 - Sub-cut 120 (one hundred twenty) Triangle Templates.

Fabric O

- Cut 1 (one) 6½" x WOF strip, then;
 - Sub-cut 8 (eight) Triangle Templates.
- Cut 1 (one) 3½" x WOF strip, then;
 - Sub-cut 5 (five) Mini Triangle Templates.

Fabric P

- Cut 1 (one) 6½" x WOF strip, then;
 - Sub-cut 4 (four) Triangle Templates.

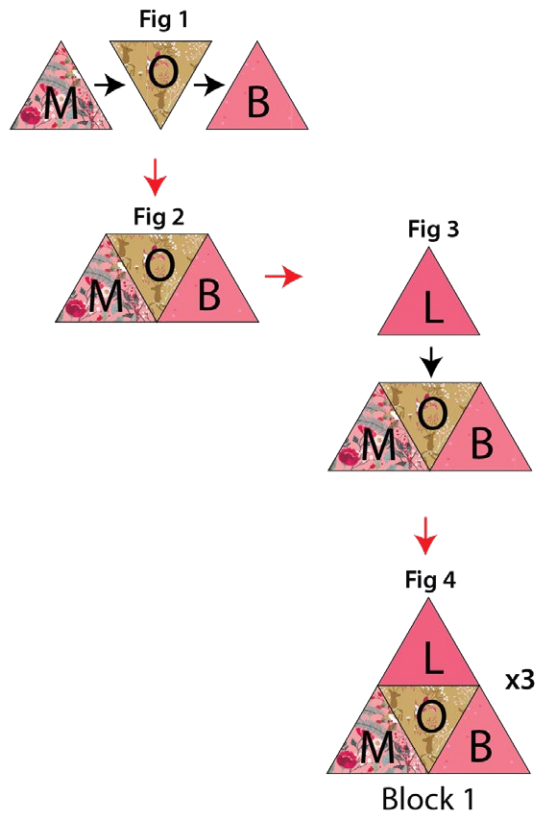
Fabric Q

- Cut 9 (nine) 2½" x WOF strips. (Binding)

CONSTRUCTION

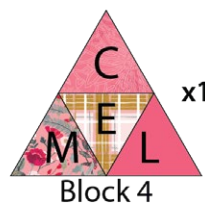
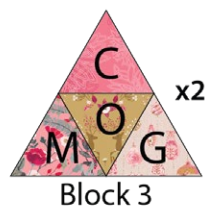
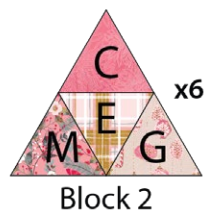
Sew all rights sides together with ¼" seam allowance.

- Gather your Mini-Triangles (fig 1) and assemble them into the blocks. First sew the bottom three triangles into a row (fig 2), and then sew the top triangle onto the bottom (fig 3).
- When finished your block should be the same size as the full-size Triangle pieces.
- For Block 1 fabric placement and attachment refer to Diagram 1 for reference. You will need 3 (three) Block 1 in total. (fig 4).



- Sew triangles and Mini-Triangle Blocks together into rows.
- Next, sew rows 1 and 2 together, start sewing from the left edge to right edge.
- Sew rows 2 and 3 together starting from the right edge and ending on the left side.
- Continue alternating your sewing start point from row to row to prevent skewing of the quilt top. When finished give your quilt a good press.
- See diagram 3 on the following page.

- Follow the previous steps to make the following mini blocks combination.
- You will need 6 (six) Block 2, 2 (two) Block 3, and 1 (one) Block 4.





- Quilt as desired and trim the quilt top on both sides as shown on diagram below.



DIAGRAM 4

QUILT ASSEMBLY

Sew rights sides together.

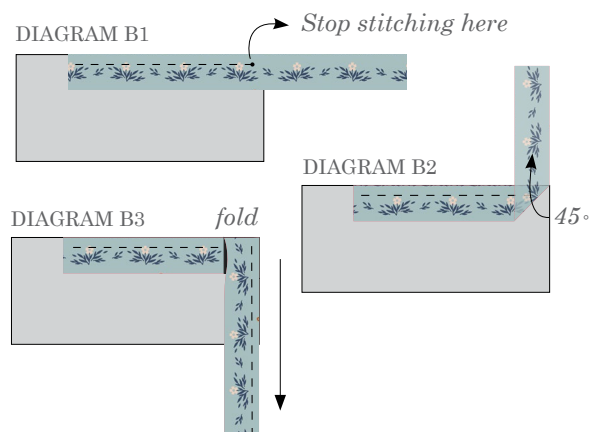
- Place BACKING FABRIC on a large surface wrong side up. Stretch it with masking tape against that surface.
- Place BATTING on top of backing fabric.
- Place TOP on top of the batting with right side facing up. Smooth away wrinkles using your hands.
- Pin all layers together and baste with basting thread, using long stitches. You can also use safety pins to join the layers.
- Machine or hand quilt starting at the center and working towards the corners. Remember that quilting motifs are a matter of personal preference. Have fun choosing yours!
- After you finished, trim excess of any fabric or batting, squaring the quilt to proceed to bind it.

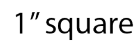
BINDING

Sew rights sides together.

- Sew 9 (nine) 2½" x WOF strips from fabric Q to make a final strip 356" long. Start sewing the binding strip in the middle of one of the sides of the quilt, placing the strip right side down and leaving an approximated 5" tail. Sew with ¼" seam allowance (using straight stitch), aligning the strip's raw edge with the quilt top's raw edge.
- Stop stitching ¼" before the edge of the quilt (DIAGRAM B 1). Clip the threads. Remove the quilt from under the machine presser foot. Fold the strip in a motion of 45° and upward, pressing with your fingers (DIAGRAM B2). Hold this fold with your finger, bring the strip down in line with the next edge, making a horizontal fold that aligns with the top edge of the quilt (DIAGRAM B3). Start sewing at ¼" of the border, stitching all the layers. Do the same in the four corners of the quilt.

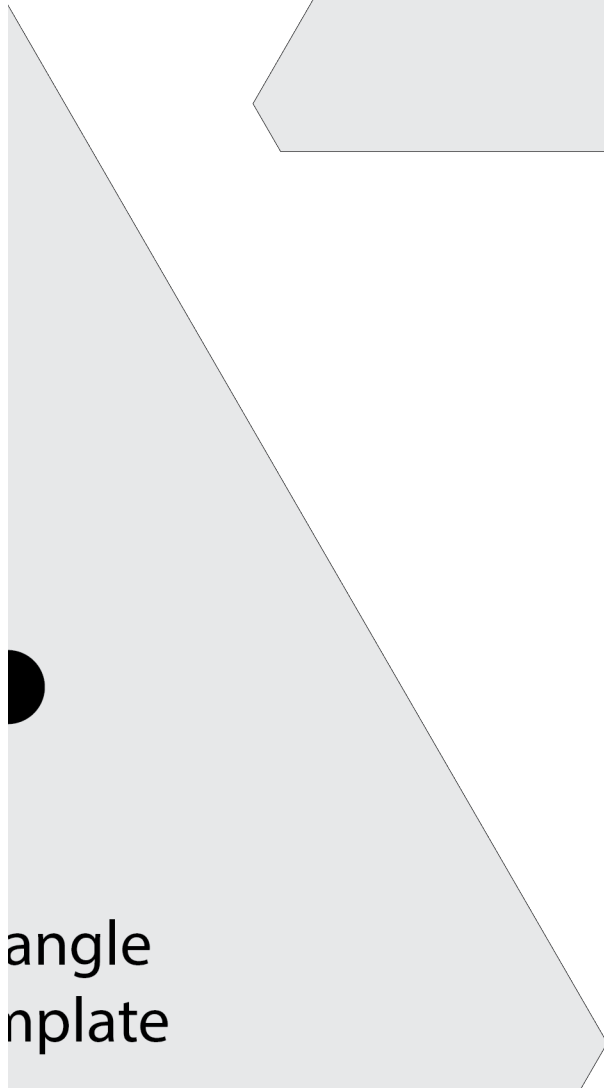
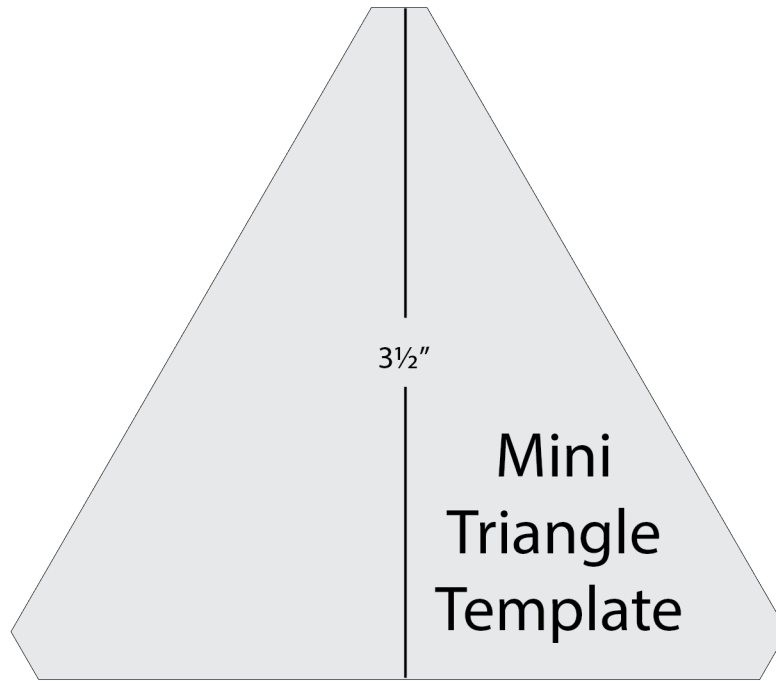
- Stop stitching before you reach the last 5 or 6 inches. Cut the threads and remove the quilt from under the machine presser foot. Lay the loose ends of the binding flat along the quilt edge, folding the ends back on themselves where they meet. Press them together to form a crease. Using this crease as the stitching line, sew the two open ends of the binding with right sides together (you can help yourself marking with a pencil if the crease is difficult to see).
- Trim seam to ¼" and press open. Complete the sewing. Turn binding to back of the quilt, turn raw edge inside and stitch by hand using blind stitch.
- If you are using our 2.5 edition (binding fabric), click or scan this QR code to see a tutorial on how to use this specialty fabric.





6½"

Tri
Ten



XXXXXXXXXXXXXXXXXXXXXXXXXXXX

*Congratulations
& enjoy*

XXXXXXXXXXXXXXXXXXXXXXXXXXXX



artgalleryfabrics.com

NOTE: While all possible care has been taken to ensure the accuracy of this pattern, We are not responsible for printing errors or the way in which individual work varies.

Please read instructions carefully before starting the construction of this quilt. If desired, wash and iron your fabrics before starting to cut.

© 2025 Courtesy of Art Gallery Quilts LLC. All Rights Reserved.